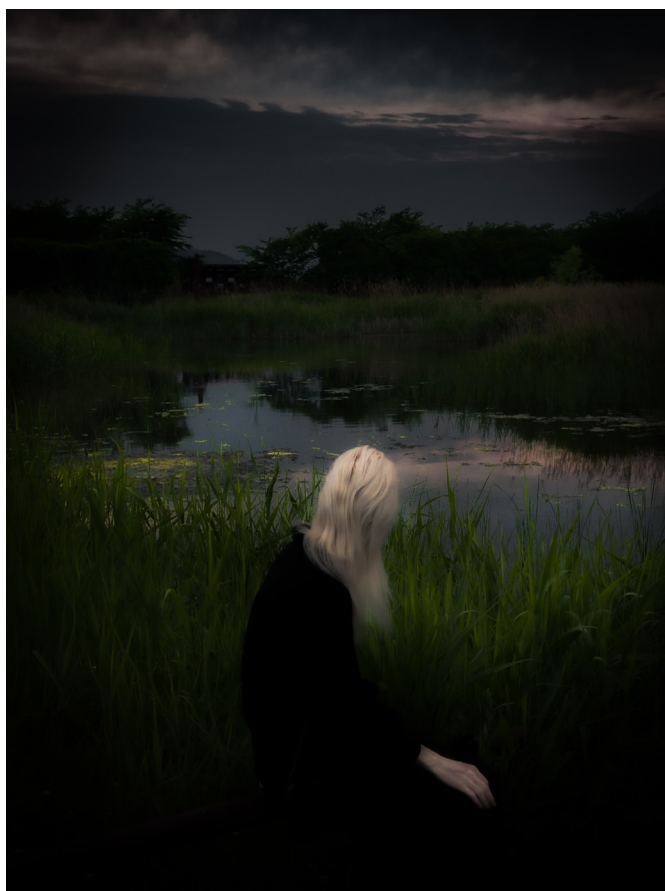




Ara Ko
Stranger's Field 04, 2021
Archival print on Hahnemühle satin paper

60x80
Edition of 2 + 1 AP

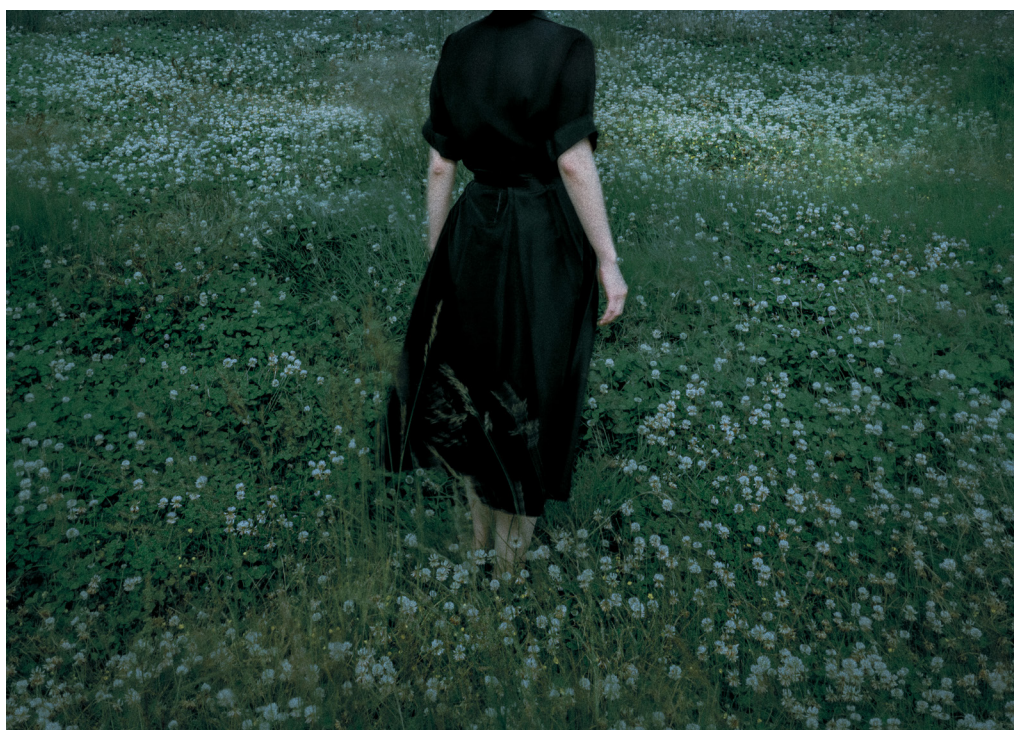
75x100
Edition of 2 + 1 AP



Ara Ko
The Marsh, 2021
Archival print on Hahnemühle satin paper

45x60
Edition of 3 + 1 AP

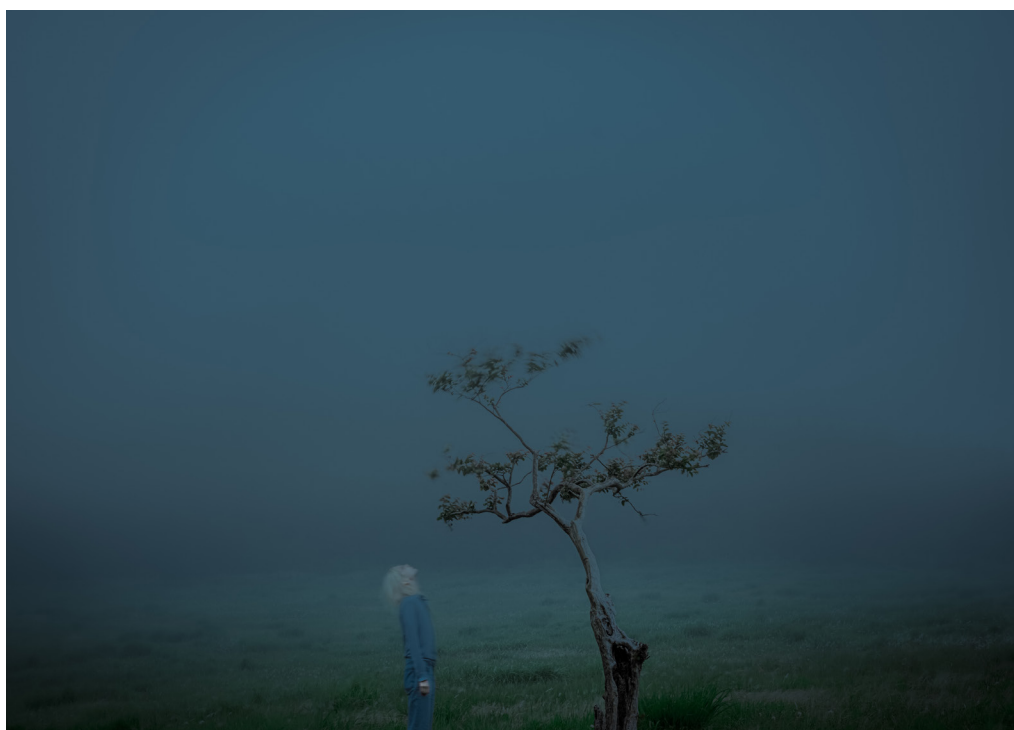
100x75
Edition of 3 + 1 AP



↗
Ara Ko
In the Meadow, 2020
Archival print on Hahnemühle satin paper

60x80
Edition of 3 + 1 AP

71,5x100
Edition of 3 + 1 AP



Ara Ko
The Tree, 2021
Archival print on Hahnemühle satin paper

60x80
Edition of 2 + 1 AP

75x100
Edition of 2 + 1 AP



Ara Ko
Whistling Reeds, 2021
Archival print on Hahnemühle satin paper

60x80
Edition of 2 + 1 AP

75x100
Edition of 2 + 1 AP



Lara Micheli
I won't let you down, 2024
Archival print on Hahnemühle satin paper

70x100
Edition of 3 + 1 AP



Lara Micheli
Blinding lights, 2021
Archival print on Hahnemühle satin paper

50x50
Edition of 3 + 1 AP

70x70
Edition of 2 + 1 A



Lara Micheli
Killing me softly, 2022
Archival print on Hahnemühle satin paper

50x50
Edition of 3 + 1 AP

70x70
Edition of 2 + 1 AP



Laurent Goumarre
Chambre étroite 01 (Hervé Guibert, Elbe), 2021
Archival print on Hahnemühle satin paper

53x53
Edition of 3 + 2 AP



↗
Laurent Goumarre
Chambre étroite 02 (Hervé Guibert, Elbe), 2021
Archival print on Hahnemühle satin paper

53x53
Edition of 3 + 2 AP



↗
Laurent Goumarre
Chambre étroite 03 (Hervé Guibert, Elbe), 2021
Archival print on Hahnemühle satin paper

53x53
Edition of 3 + 2 AP

Window Fourteen
Art Photography Gallery

Noa Ella Grandchamp
Founder & Curator
Rue de Montchoisy 23
1207 Genève – Suisse

+41 79 932 51 32
noa@windowfourteen.com
windowfourteen.com